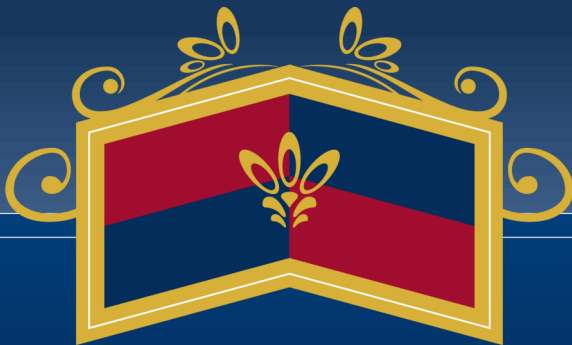




Wembley  
Multi-Academy  
Trust

ACHIEVEMENT FOR ALL



NORTH BRENT  
SCHOOL



WEMBLEY HIGH  
TECHNOLOGY COLLEGE



# Sixth Form Information Brochure

2025  
ENTRY

The Sixth Form at WMAT schools is a truly unique experience. We believe in ensuring everyone leaves us with the qualifications, knowledge and skills they need to ensure success in an increasingly challenging and globally competitive work place. We do this by offering a full suite of additional academic A Level courses.

We have a track record of supporting pupils to realise their aspirations and ambitions to study at the most prestigious universities and degree apprenticeship providers. You will be taught by highly qualified and outstanding teachers who will stretch and challenge you to achieve as highly as you can and alongside this, we provide the highest level of personal guidance and care to ensure that you are fully supported during your time with us.

## Academic Success

Academic achievement is at the heart of our Sixth Form. Excellent grades are the 'golden ticket' which empower you to study at prestigious universities and pursue your career ambitions. Our A Level results have been consistently amongst the very highest nationwide and in 2024 we celebrated our best ever results:

- ◆ 36% of exams were awarded A\*/A grades (that is 159 individual qualifications at this standard).
- ◆ 62% of exams were A\*-B grades and 100% of exams were A\*-E standard.
- ◆ 32 students scored 3 A grades or higher.
- ◆ 1 in 3 students are going to study at Russell Group Universities, including Imperial, UCL and King's College London.
- ◆ 6 students are going to study at Oxford or Cambridge.
- ◆ Over 60% of students are going to a UK top 40 university.

## Progression to university

Whatever you're interested in studying beyond Sixth Form, we will help you realise your dreams. We have a rigorous and extensive programme for preparing all pupils for university admission which has been tried and tested for many years. This includes specialist support to ensure that your personal statement is of the highest quality, preparation for university admissions tests for Oxbridge and other leading universities and interview preparation to develop your personal skills. We know that we have a formula for success. In 2023 - 24, more than a third of our pupils secured places at Russell Group Universities, with our highest ever number of students securing places at Oxbridge. Over the last 3 years, students have pursued prestigious degree apprenticeships with leading companies including Goldman Sachs, JP Morgan and Credit Suisse.

## Extracurricular Opportunities

Life in Sixth Form is not just about academic excellence – it is important that you start to develop the wide range of softer skills that you need to succeed. The Sixth Form provides you with opportunities to be mentored by leaders at director level and above in FTSE 100 companies through programmes such as Migrant Leaders or through The Girls' Network. Extracurricular programmes like the Brilliant Club Scholars Programme, Debate Mate and the K+ Programme are also available as well as many diverse societies including coding club and the Shakespeare society. In addition, to broaden your horizons we run excursions and visits to many prestigious galleries, museums, and exhibitions in London to develop your cultural capital and knowledge of the arts. You will also have many opportunities for involvement in the College and wider community by becoming Sixth Form Ambassadors, duty monitors, academic society leaders and Sixth Form council representatives. These experiences encourage you to develop key communication and leadership skills necessary for success in your future.

I look forward to you continuing your educational success in the Sixth Form.



**Beth Ragheb**  
CEO of WMAT



**Tom Best**  
Headteacher of Wembley High Technology College

Information, Advice, Support & Guidance

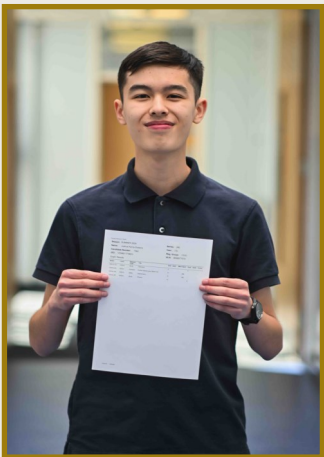
Wembley High Technology College’s Sixth Form is recognised locally and nationally for its outstanding academic successes. A key element in maintaining and strengthening these successes is the support and guidance that we offer to each of our pupils.

With a wealth of experience and a range of strengths, our Sixth Form team is always focused on meeting the individual needs, both academic and pastoral, of each pupil. They are truly invested in providing a bespoke experience and have developed a pastoral curriculum that reflects the high ambition they hold for pupils' academic achievement and personal development.

Our specialist team of Sixth Form Year Leaders and tutors support and guide you through your learning by developing your academic study skills. All pupils in our Sixth Form are exposed to the 'Science of Learning' principles through a dedicated professional development programme, and here you are encouraged to use the tried and tested revision techniques from the outset. By honing these skills in Year 12, our pupils build their confidence and become highly independent learners - a key determinant of success. In addition, the team regularly set challenging targets and monitor your progress, coach you through and help you to overcome any barriers you may face to learning. The Sixth Form team regularly identifies individuals for additional support and mentors these pupils to ensure they achieve their full potential.

As a Sixth Form pupil you will follow a weekly careers programme and will be involved in a series of events that give you the information, advice and guidance that you need to get the most out of your Sixth Form education and to prepare you for the future. We have a dedicated Careers Lead who works closely with Sixth Form students to provide expert advice on courses to pursue and how to make the best applications. We provide you with access to the Unifrog platform where you will be able to independently research various careers that interest you and take the first steps in achieving yours goals. Our Guest Speaker Series also allows you to hear from professionals from a range of sectors and this will motivate you to pursue careers in medicine, business consultancy, science, law and the civil service to name but a few. We provide a range of sessions to help you to produce the highest quality applications for university and degree apprenticeships including UCAS guidance sessions, personal statement workshops, mock interview practice and attending university taster and open days. In addition, for those aspiring to gain places at Oxbridge or in courses such as medicine and dentistry we have an Early Entry Cohort that get intensive preparation and support for these applications including admission test preparation and resources. Throughout the Migrant Leaders programme, you will visit companies such as Meta and Anglo American so that you develop an informed opinion on different career paths.

Joshua

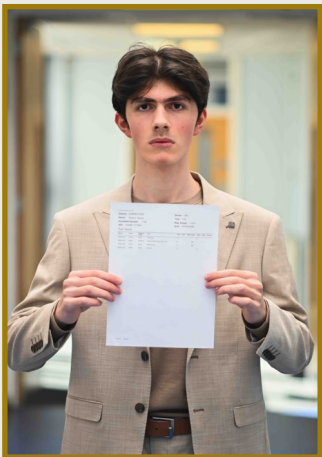


Degree Course  
Engineering

University  
University of Cambridge

- A Level Subjects 2023 - 2024
- Chemistry A\*
  - Maths A\*
  - Further Maths A\*
  - Physics A\*

Nikoloz



Degree Course  
Physics

University  
University of Oxford

- A Level Subjects 2023 - 2024
- Maths A\*
  - Further Maths A\*
  - Chemistry A\*
  - Physics A\*



## Enrichment Opportunities

All Sixth Form pupils are strongly encouraged to get involved in a variety of enrichment programmes and activities that enhance their learning and their personal development in new and exciting ways.

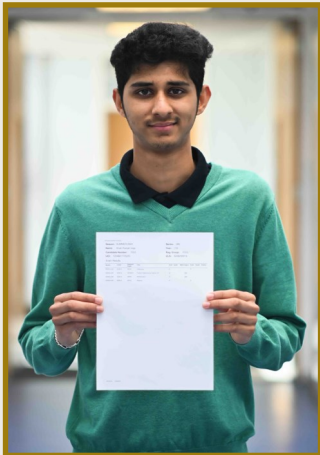
The Sixth Form participates in several long-term academic programmes, such as, Pathways to Medicine and STEM Potential (Imperial College), Target Medicine (UCL), the K+ Programme (King’s College, London), LSE Choice, Project Access, Migrant Leaders and The Girls’ Network. Successful applicants are allocated mentors from universities or from relevant professions and are given additional support and guidance with their studies, higher education and career options. Participants attend residential, lectures, debates and key events at a range of prestigious universities and employers across London.

We have also placed pupils on The Brilliant Club Scholars Programme which provides opportunities for pupils to engage in an area of study at degree level by working with visiting PHD students. This programme is challenging and helps to develop leadership, team building and problem- solving skills amongst those who participate. We are very proud of being a multi-lingual school and all Sixth Form students are given the opportunity to learn Mandarin with timetabled lessons each week with a teacher from the Confucius Institute.

Our weekly newsletter ensures all Sixth Form pupils are exposed to a range of extra and supra-curricular activities that will enable them to broaden their horizons beyond the taught curriculum. For example, academic competitions such as the Biology and Physics Olympiad and Senior Maths Challenge are run annually and there are a range of pupil led societies such as the Maths Society and the Medicine Society that allow pupils with similar interests to delve deeper into subject matter at weekly focus groups and seminars.

Field trips and study visits feature regularly on the calendars of advanced level courses. Geography fieldwork in Wales and a Spanish trip to Valencia are recent examples of this. In addition, pupils are actively encouraged to attend university taster sessions and open days, and the Sixth Form team support all applications for these widening participation opportunities. The Cultural Friday provision is our most popular enrichment experience; here pupils are taken to central London to attend the theatre and opera or to explore museums and galleries. All Year 12 students are encouraged to complete the Duke of Edinburgh Bronze Award, doing sixth months of charity work, learning a new skill set and sports, as well as planning and leading overnight camping expectations. These events allow our pupils to develop their independence and open their eyes to the wealth of culture that surrounds them.

### Krish



**Degree Course**  
Mechanical Engineering

**University**  
University of Oxford

**A Level Subjects 2023 - 2024**  
•Maths A\*  
•Further Maths A\*  
•Physics A\*  
•Chemistry A

### Harshi



**Degree Course**  
Computer Science

**University**  
University of Cambridge

**A Level Subjects 2023 - 2024**  
•Maths A\*  
•Further Maths A\*  
•Biology A\*  
•Chemistry A

Active Participation in the Community

Pupils are strongly encouraged to participate fully in Sixth Form life and take an active part in the College and the wider community. Pupils have the chance to join the Sixth Form Council, be a Senior Prefect or stand for election to represent the College as Head Boy or Head Girl.

The Sixth Form Council plays an active role in shaping the life and ethos of the Sixth Form and members are given regular opportunities to develop their leadership and communication skills by planning and delivering assemblies that represent the interests of their peer group, and by organising charity events such as bake sales and sports competitions, to raise funds for deserving causes. The Council also participates in regular reviews whereby students in the Sixth Form are encouraged to reflect on the quality of teaching and learning and the pastoral provision. Suggestions for improvement are shared at Council meetings and through collaboration with the Sixth Form Team these are acted upon to ensure that pupil voice is heard.

Sixth Form pupils can also take on positions of responsibility and act as positive role models for younger pupils. There are many positions available within the College including peer mentoring, open evening and parents’ evening helpers, duty monitors and opportunities to tutor younger students in English and Maths. These encourage our Sixth Form pupils to become responsible, trusted members of the community as they develop key transferable skills such as strong teamwork.

We are extremely proud of the culture and ethos of our Sixth Form and look forward to welcoming pupils who have the highest professional standards, enthusiasm for working collaboratively and an eagerness to contribute positively to the wider community that we are part of.

Lakshicca



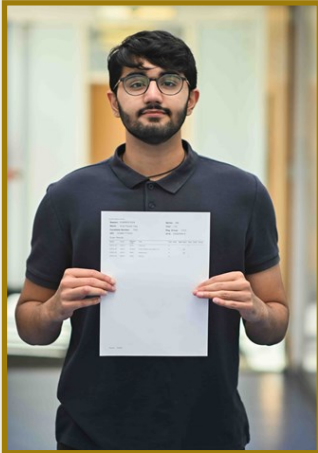
**Degree Course**  
Economics

**University**  
University of Cambridge

**A Level Subjects 2023 - 2024**

- Economics A\*
- Maths A\*
- Further Maths A\*

Preet



**Degree Course**  
Electrical and Information Engineering

**University**  
Imperial College London

**A Level Subjects 2023 - 2024**

- Chemistry A\*
- Maths A\*
- Further Maths A\*
- Physics A\*

## WMAT Sixth Form Admission Information

Places in Year 12 will be awarded in the following order of priority:

1. Children currently in public care (Looked After Children) / children previously in public care who meet the entry requirements and subject specific criteria.
2. Students who are on roll at Wembley High Technology College or North Brent School at the end of Year 11 and who meet the entry requirements and subject specific criteria. Students must apply *by Wednesday, 18<sup>th</sup> December 2024*.
3. External applicants who are on track to meet entry requirements and subject specific criteria must apply *by Wednesday, 18<sup>th</sup> December 2024*. Any applications received after this date will be added to the waiting list. Provisional offers will be made after formal interview and will be dependant on results in August 2025.

### A Level Entry Requirements

#### All students:

- ◆ English Language or Literature GCSE at grade 6+
- ◆ Maths GCSE at grade 6 or above

#### 3 A Level Offer:

- ◆ 6 GCSEs at grade 5+, plus GCSE Maths and English at grade 6+

#### 4 A Level Offer:

- ◆ 6 GCSEs at grade 6+, plus GCSE Maths and English at grade 6+

#### **Additional subject specific requirements:**

- ◆ Maths - grade 7+ at GCSE
- ◆ Further Maths - grade 9+ at GCSE
- ◆ Art - GCSE Art or Photography grade 6+
- ◆ A Level Sciences:
  - Separate Science with at least 2 grade 6+. (One must be in the Science that you want to continue with at A Level).
  - Combined Science with grade 66+
- ◆ Economics - English and Maths grade 6+ at GCSE
- ◆ Geography - GCSE Geography at grade 6+
- ◆ History - GCSE History at grade 6+
- ◆ Spanish - GCSE Spanish at grade 6+
- ◆ RS, Business, Psychology, Sociology - GCSE English at grade 6+

#### *Additional notes:*

- We reserve the right to withdraw subjects that are undersubscribed.
- All applicants must be aged 16 on the 31<sup>st</sup> August in the year of application to start Year 12.
- Students must meet the entry requirements for their chosen programme of study.
- Students must meet the individual subject criteria.
- Places will be offered in accordance with points 1-3 above and are subject to availability of places on courses and availability of combinations of subjects.
- Late applicants may be invited for discussion if places are available on their chosen courses or for a place on the waiting list.

## Fine Art

### Specific entry requirements:

Art GCSE grade 9–6.

### Content:

AQA A Level Fine Art is a direct continuation of the GCSE course and follows the same assessment format. Pupils work in a highly motivated and independent fashion, their passion and enthusiasm for the subject is supported by highly qualified teachers who are incredibly interested in the wider world of art & design and are on hand to share their expertise. Our well-resourced course enables pupils to consider further study or employment in a wide range of creative careers such as: architecture, interior design, museum and exhibition design, photography, theatre design, costume design, make up, jewellery, fashion, illustration, product design, and furniture design. For those seeking employment in a different sector, a creative and observant mind can be a quality that sets them apart from the rest of the field.

### AS Components:

Component 1: 60% Coursework

- Personal portfolio

Component 2: 40%

- Externally set assignment consisting of 10 weeks preparatory studies & 10 hour exam

### A Level Components:

Component 1: 60% Coursework

- Personal portfolio & Written essay

Component 2: 40%

- Externally set assignment consisting of 8 weeks preparatory studies & 15 hour exam

### Contact for further information:

Ms Donovan

## Biology

### Specific entry requirements:

Separate Sciences: At least 2 GCSE grades 9–6 and minimum grade 7 in Biology.

Combined Science: Grade 6–6 or higher.

### Content:

The course provides an in-depth study of fundamental biological principles and explores modern applications of Biology considering social, economic, environmental, ethical, medical and technological aspects. Both the AS and A Level examination papers include questions on core practicals and experimental techniques and 10% of the papers assess candidates on mathematical skills.

### AS Components:

Two examination papers (50% each)

- Lifestyle, health and risk
- Genes and health
- Voice of the genome
- Biodiversity and natural resources
- Experimental methods

### A Level Components:

Three examination papers (33.3% each)

- On the Wild Side
- Immunity, infection and forensics
- Run for Your Life
- Grey matter
- Questions on a pre-released article
- Experimental methods

### Contact for further information:

Ms Jeyakumar

“ Teachers are subject experts. They know how to get the best from pupils...  
Pupils produce work of an exceptionally high quality...”

## Business

### Specific entry requirements:

A keen interest in Business.

### Content:

The course introduces pupils to the dynamism of the business environment and the importance of entrepreneurial activity in creating business opportunities and sustaining business growth. Pupils will have the opportunity to develop a wide range of essential skills required for higher education and employment.

This course in business encourages pupils to:

- Develop an enthusiasm for studying business.
- Gain a holistic understanding of business in a range of contexts.
- Develop a critical understanding of organisations and their ability to meet society's needs and wants.
- Understand that business behaviour can be studied from a range of perspectives.
- Generate enterprising and creative approaches to business opportunities, problems and issues.
- Be aware of the ethical dilemmas and responsibilities faced by organisations and individuals.
- Acquire a range of relevant business and generic skills, including decision making, problem solving, the challenging of assumptions and critical analysis.
- Apply numerical skills in a range of business contexts.

### AS Components:

Two examination papers

Component 1: Business Opportunities (40%)

Component 2: Business Functions (60%)

### A Level Components:

Three examination papers

Component 1: Business Opportunities & Functions (33%)

Component 2: Business Analysis & Strategy (33%)

Component 3: Business in a Changing World (33%)

### Contact for further information:

Ms Woods

## Chemistry

### Specific entry requirements:

Separate Sciences: At least 2 GCSE grades 9–6 and minimum grade 7 in Chemistry.

Combined Science: Grade 6–6 or higher. Maths GCSE grade 9–6.

### Content:

The course covers key ideas in physical, inorganic and organic chemistry and enables students to think in an analytical, logical and rigorous fashion. Both the AS and A Level examination papers include questions on core practicals and experimental techniques and 20% of the papers assess candidates on mathematical skills.

### AS Components:

Two examination papers (50% each)

- Atomic structure and the Periodic Table
- Bonding and structure
- Redox 1
- Inorganic Chemistry and the Periodic Table
- Formulae, equations and amounts of substance
- Organic Chemistry 1
- Modern analytical techniques 1
- Energetics 1
- Kinetics 1
- Equilibrium 1
- Experimental methods

### A Level Components:

Three examination papers (Papers 1 & 2: 30% each, Paper 3: 40%)

- Equilibrium 11
- Acid-base Equilibria
- Energetics 11
- Redox 11
- Transition metals
- Kinetics 11
- Organic Chemistry 11 & 111
- Modern analytical techniques 11
- Experimental methods

### Contact for further information:

Ms Jeyakumar



## Economics

### Specific entry requirements:

A keen interest in Economics and English and Maths grades 9–6.

### Content:

Economics looks at how decisions about the allocation of resources are made at all levels of society, from the individual to the international level. Microeconomics examines the decisions and behaviour of individuals, consumers and firms (companies). Macroeconomics focuses at the level of whole countries or the international economy.

In this course, you will examine questions such as: how are wages determined? Why are some countries richer than others? What are recessions and what should we do about them?

### AS Components:

Two examinations papers (50% each)

- Paper 1: the operation of markets and market failure: economic methodology and the economic problem; price determination in a competitive market; production costs and revenue; competitive and concentrated markets; market mechanism, market failure and government intervention in markets.
- Paper 2: the national economy in a global context: measurements of macroeconomic performance; how the macroeconomy works; economic performance; macroeconomic policy.

### A Level Components:

Three examination papers (33.3% each)

- Paper 1: individuals, firms, markets and market failure: economic methodology and economic problem; individual economic decisions making; price determination in a competitive market; production, costs, and revenue; perfect competition, imperfectly competitive markets and monopoly; labour market; distribution of income and wealth, poverty and inequality
- Paper 2: the national and international economy: financial markets and monetary policy; fiscal policy and supply-side policies; international economy
- Paper 3: applications of microeconomics and macroeconomics

### Contact for further information:

Ms Woods

## English Literature

### Specific entry requirements:

GCSE English grade 9–6 and a strong enjoyment of reading.

### Content:

The course exposes students to the challenge of engaging with literature from a variety of genres, time periods and literary traditions. Through close text analyses, stimulating discussions and formulation of arguments, our pupils develop their ability to articulate themselves convincingly, both verbally and in writing. The study of English Literature, with its rigorous discussion and essay components, is excellent preparation for a variety of degree courses.

### AS Components:

Two examination papers (50% each)

- Shakespeare and Poetry: Shakespeare's tragedy 'Othello' and an anthology of poems from pre 1900.
- Love Through the Ages: 'Atonement' by Ian McEwan, alongside 'The Great Gatsby' by F. Scott Fitzgerald. There will also be an unseen section of the exam.

### A Level Components:

Two examination papers (40% each)

- Shakespeare and Poetry: Shakespeare's tragedy 'Othello', Fitzgerald's 'The Great Gatsby' and an anthology of poems from pre-1900. There will also be a comparison of two unseen poems.
- Post 1945 Literature: (play) 'A Streetcar Named Desire' by Tennessee Williams; (novel) 'The Handmaid's Tale' by Margaret Atwood; (Poetry) 'Skirrid Hill' by Owen Sheers. There will also be an unseen section of the exam.

An Independent Critical Study (20%)

- Comparative critical study of two texts, at least one of which must have been written pre-1900.

### Contact for further information:

Ms Byles

*“ Leaders ensure that the school is academically ambitious and nurtures pupils’ personal and social development. Pupils are happy here ... [they] and are determined to do well. ”*

## Geography

### Specific entry requirements:

Geography GCSE grade 9–6.

### Content:

Geography is a truly interdisciplinary subject. Through the study of human and physical Geography, a range of issues are explored that are relevant in today's society and that of the future. Studying Geography places pupils in a unique position to be excellent team workers, analytical thinkers and have a strong awareness of global issues.

### AS Components:

Two examinations papers (50% each)

#### Paper 1:

Hazards: Through the study of hazards pupils discover the link between levels of development and the vulnerability to disasters.

Coastal landscapes: Pupils gain an awareness of the fragility of the coastal system and compare impacts in the UK with developing countries.

#### Paper 2:

Fieldwork: physical and human investigations. Pupils partake in two residential field trip to the Gower peninsula in Wales.

Changing places: Pupils learn about the impacts of economic, environmental, political and social changes in their local area as well as a contrasting case study.

### A Level Components:

Two examination papers (40% each)

#### Paper 1:

Water and carbon cycles: Pupils discover the impact of human activity on the functioning of Earth's four major systems, including linking human activity in the UK to impacts in the Amazon Rainforest.

#### Paper 2:

Contemporary urban environments: Pupils learn the socio-economic and environmental challenges facing cities in the 21<sup>st</sup> century.

Global systems of Governance: Pupils engage with geopolitical debates and consider how this impact their own lives.

#### NEA (20%):

3000 - 4000 words independent investigation.

### Contact for further information:

Ms Adamis

## History

### Specific entry requirements:

History GCSE grade 9–6.

### Content:

History A Level provides pupils with the opportunity to develop their understanding of British and global early modern and modern history. Our "breadth study" unit focuses on the period of the Tudors (c.1485-1603), and covers the significant historical developments that took place during the renowned Tudor dynasty. By engaging with historians' arguments about the period, pupils will acquire a firm understanding of monarchical power in 16th century England, as well as England's connections to the wider world, religious and intellectual changes, and the threats experienced by Tudor monarchs at home and overseas.

Our "depth study" unit focuses on the period of the Cold War (c. 1945-1991) - the era of tension between capitalist, democratic powers and communist nations after the Second World War. Pupils will study the evolving nature of international relations at the time through the lens of historical sources, considering how relations between the USA, the Soviet Union and their respective allies had extensive effects on world (in Europe, Asia and Africa). Across both units, pupils will develop their skills constructing and communicating strong and coherent lines of arguments, and will develop a range of transferable skills valuable for their other A Level subjects and future studies.

### AS Components:

The AS Level in History is made up of two examined components:

- The Tudors (50%): focusing on the reigns of Henry VII and Henry VIII (1485-1547)
- The Cold War (50%): "To the brink of nuclear war" - international relations up to 1963.

### A Level Components:

The A Level in History is made up of two examined components, and one non-examination assessment:

- The Tudors (40%): the reigns of Tudor monarchs (c.1485 to 1603)
- The Cold War (40%): the period of the Cold War from 1945-1991.
- Non-examination assessment (20%): A 4500-word written piece of coursework focused on one of the following topics:
  - Civil Rights in the USA (1865-1965)
  - Tsarist and Soviet Russia (1855-1953)

### Contact for further information:

Ms Barma

## Mathematics

### Specific entry requirements:

Maths GCSE grade 9–7.

### Content:

Pure Mathematics builds on GCSE and introduces new concepts and their applications. Mechanics is the application of mechanical concepts and techniques in the physical world, while statistics plays a crucial role in judging how well a mathematical model describes a real-world problem.

### AS Components:

- Paper 1: (Pure Mathematics – 62.5%): proof, algebra and functions, coordinate geometry, sequences and series, trigonometry, exponentials and logarithms, differentiation, integration and vectors.
- Paper 2: (Statistics and Mechanics – 37.5%): statistical sampling, data presentation and interpretation, probability, statistical distributions, statistical hypothesis testing, kinematics, forces and Newton's laws.

### A Level Components:

- Paper 1: (Pure Mathematics 1 – 33%): proof, algebra and functions, coordinate geometry, sequences and series, trigonometry, exponentials and logarithms, differentiation, integration and vectors.
- Paper 2: (Pure Mathematics 2 – 33%): proof algebra and functions, coordinate geometry, sequences and series, trigonometry, differentiation, integration and numerical methods.
- Paper 3: (Statistics and Mechanics – 33%): statistical sampling, data presentation and interpretation, probability, statistical distributions, statistical hypothesis testing, kinematics, forces, Newton's laws and moments.

### Contact for further information:

Ms Murphy & Ms Lounes

## Further Mathematics

### Specific entry requirements:

Maths GCSE grade 9.

### Content:

Core Pure Mathematics enables pupils to extend their range of mathematical skills and techniques to analyse and solve challenging problems and apply reason and logic. Further Mechanics is the application of mechanical concepts and techniques in the physical world through new ideas. Further Pure Mathematics extends pupils' knowledge of core topics with differential equations and conic sections.

### AS Components:

- Paper 1: (Core Pure Mathematics 1 – 50%): proof, complex numbers, matrices, further algebra and functions, further calculus, further vectors.
- Paper 2: (Further Mechanics 1 and Further Pure 1 – 50%):
  - ♦ Further Mechanics 1: momentum and impulse, work, energy and power elastic collisions in 1 dimension.
  - ♦ Further Pure 1: vectors, conic sections 1, inequalities, t-formulae and numerical methods.

### A Level Components:

- Paper 1: (Core Pure Mathematics 1 – 25%): proof, complex numbers, matrices, further algebra and functions, further calculus, further vectors.
- Paper 2: (Core Pure Mathematics 2 – 25%): complex numbers, further algebra, and functions, further calculus, polar coordinates, hyperbolic functions and differential equations.
- Paper 3: (Further Pure 1 – 25%): vectors, conic sections, inequalities, t-formulae, Taylor series, methods in calculus, numerical methods, reducible differential equations.
- Paper 4: (Further Mechanics 1 – 25%): mechanical impulse, work, energy and power, elastic strings and springs, elastic collisions in 1 dimension and 2 dimension.

### Contact for further information:

Ms Murphy & Ms Lounes

“

*All staff share leaders' extremely high aspirations for pupils in the school.*

”

## Physics

### Specific entry requirements:

- ♦ Separate Sciences: At least 2 GCSE grades 9–6 and minimum grade 7 in Physics.
- ♦ Combined Science: Grade 6–6 or higher. Maths GCSE grades 9–6.

### Content:

This course contains both practical and theoretical elements and explores a wide range of topics from mechanics to particle physics. Both the AS and A Level examination papers include questions on core practicals and experimental techniques and 40% of the papers assess candidates on mathematical skills.

### AS Components:

Two examination papers (50% each)

- Mechanics
- Electric circuits
- Materials
- Waves and the particle nature of light
- Experimental methods

### A Level Components:

Three examination papers (Papers 1 & 2: 30% each, Paper 3: 40%)

- Further mechanics
- Electric and magnetic fields
- Nuclear and particle physics
- Thermodynamics
- Space
- Nuclear radiation
- Gravitational fields
- Oscillations
- Some AS topics
- Experimental methods

### Contact for further information:

Ms Jeyakumar

## Psychology

### Specific entry requirements:

Science GCSE 9–6 is preferred.

### Content:

Psychology is the scientific study of the mind and human behaviour. Pupils examine how behaviour is studied and how psychologists test their hypotheses. The procedures, findings and conclusions of research into different fields of psychology are the main focus of the course.

### AS Components:

Two examination papers (50% each)

- Social influence
- Memory
- Attachment
- Approaches in Psychology
- Psychopathology
- Research methods

### A Level Components:

Three examination papers (33.3% each)

- Social influence
- Memory
- Attachment
- Psychopathology
- Approaches in Psychology
- Biopsychology
- Research methods
- Issues and debates in Psychology
- Gender
- Schizophrenia
- Addiction

### Contact for further information:

Ms Dulai

“

*The leadership of the Sixth Form is excellent because the vision is shared amongst all staff. Leaders and managers at every level have been relentless in securing high achievement for all students in the Sixth Form.*

”



## Religious Studies

### Specific entry requirements:

Religious Studies GCSE grade 9–6 and English GCSE grade 9–6.

### Content:

The course offers an academic approach to the study of religion, philosophy and ethics in which pupils adopt an enquiring, critical and reflective approach to philosophical and ethical issues within religion.

### AS Components:

Three examination papers (33.3% each)

- The Philosophy of Religion
- Religion and ethics
- Developments in Christian thought

### A Level Components:

- Three examination papers (33.3% each)
- The Philosophy of Religion
- Religion and Ethics
- Development in Christian thought

### Contact for further information:

Ms Player

## Sociology

### Specific entry requirements:

English GCSE grade 9–6 is preferred.

### Content:

Sociology is essentially the study of society and human interaction. It studies the main social institutions that shape and create the world in which we live, including the family, education and mass media as well as exploring contemporary social problems such as crime and deviance.

### AS Components:

Two examination papers (50% each)

- Education
- Methods in context
- Research methods
- Families and Households

### A Level Components:

Three examination papers (33.3% each)

- Education with theory and methods
- Families and Households
- Beliefs in society
- Crime and deviance with theory and methods

### Contact for further information:

Ms Dulai

“

*Students in the sixth form are highly ambitious for their futures. They choose to study A-level courses in a broad range of subjects.*

”

## Spanish

### Specific entry requirements:

Spanish GCSE grade 9–6.

### Content:

This AQA course allows pupils to build on the core vocabulary and grammar which they developed during their GCSE studies so that they can become fluent speakers with a keen understanding of the geography, history, literature and film of their linguistic area of study. The focus on technically-advanced translation also ensures that our pupils will be able to pursue university courses in Spanish and find employment using these skills at any point in their adult lives. The course is designed to develop pupils' interest in the Spanish-speaking world so that they can comment on themes ranging from Latin American Dictatorship to Pre-Hispanic civilisation. Pupils will study two broad themes: aspects of Hispanic society, and artistic culture in the Hispanic world. Pupils will also study a film in Spanish which they will analyse in detail.

### AS Components:

The AS examination consist of: a written paper (25%); a listening, reading, and writing paper (45%); and an oral examination (30%).

### A Level Components:

The A Level examination consists of: a written paper (20%); a listening, reading and writing paper (50%); and an oral examination (30%).

### Contact for further information:

Ms Skelland

“

*The teachers are clearly passionate about their subjects, and this passion inspires students to be the very best versions of themselves.*

”

YEAR 13 PUPIL

“

*With consistent support and endless opportunities, Wembley High has equipped me with all the tools I need to apply to university.*

”

YEAR 12 PUPIL

“

*Pupils leave school fully prepared for the next steps in their lives.*

”

OFSTED 2022

